

**P2060(A)/P3080(A) High-end CNC Pipe Laser Cutting Machine**

## P2060A/P3080A • Machine Parameters



### Processing size of tube and profiles

- Round tube: diameter 20-200mm/30-300mm
- Rectangle tube: Diagonal length 20-200mm/30-300mm



### Tube loading weight

- 25kg/m



### Processing tube length

- 6000mm/8000mm



### Processing tube type

- Round tube, rectangular tube, square tube, oval tube, channel steel, I-beam, angle iron, etc.

### Load Pro tube size

- 800mm\*800mm\*6000mm/800mm\*800mm\*8000mm

### Max. loading weight of the Load Pro

- 2.5T

# P2060A/P3080A • Machine Configuration and Features

## CUTTING FUNCTIONS

Frog jumping, flying cutting, fast perforation, graphic display/processing estimate, pause/rewind/continue processing

## SERVO AUTO ADJUSTING SUPPORT SYSTEM

Servo-adjusted floating support  
Servo-adjusted tail support



## PA CNC CONTROL SYSTEM

Touch operation screen, bus communication method  
New and optimized CNC software

## 3D STEREO CORRECTION

Tube software correction  
Pipe hardware correction

## UNLOADING SYSTEM

Track belt receiving  
Robot picking

### Rotation speed-120R/MIN

Adopting 4.4KW high-power servo motor with strong power, the gear is directly transmitted and driven with high transmission rate and fast speed.

### Eay to adjust

The jaw adopts two-stage adjustment. No need to adjust the claw if pipe diameter is 20-100mm or 100-200mm. And for pipe diameter is 20-200, no need to change the jaws.



### High hardness bearing steel

Gears and jaws are quenched to ensure factory precision, durable and not easily deformed. The roller part that directly comes into frictional contact with the pipe is made of high hardness bearing steel, which is durable and wear-resistant.

### High tightness

The chuck adopts high sealing design to prevent cutting debris and dust and ash particles from entering the chuck interior, which affects or shortens the service life of the inner cylinder and valve structure.



### Cast chuck base

The integrated casting process is adopted, the chuck and the machine bed are integrated for more reliable and rigid.



### Embedded installation of chuck and servo motor

Uniform precision standards, controllable quality, more convenient maintenance and replacement in the future, and better sealing.



### Ultra-long stroke jaws

Different sizes of pipe changing, no need to adjust the claw position, faster clamping and save time.



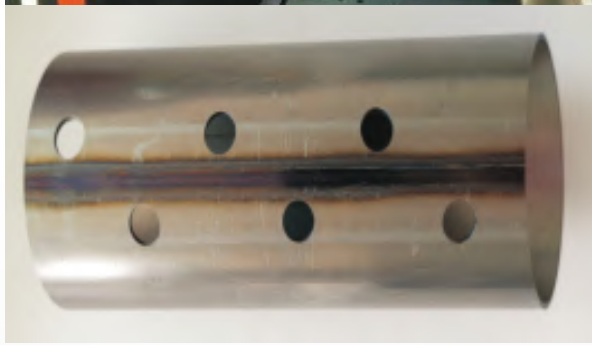
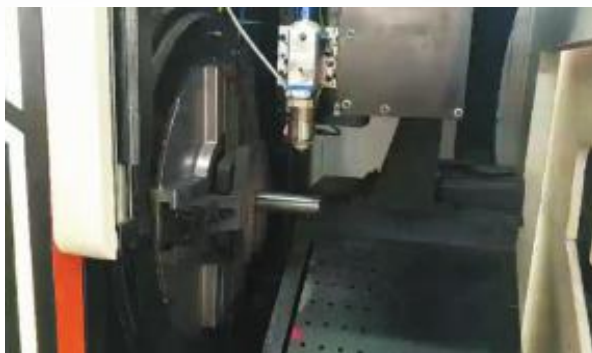
Stable & reliable,  
Convenient & time-  
saving

## P2060A/P3080A • Optional Functions



### Slag removal

During the cutting process, the slag removing pipe automatically enters into the processing pipe and keeps moving synchronously with the cutting program. It prevents the slag from adhering to the pipe inner wall.



### Weld seam recognition




The image scanning equipment is configured to automatically identify weld seam position, so that the cutting track automatically avoids the weld seam position.



### Load Pro system

It is equipped with an automatic loading system to realize automatic feeding and continuous cutting, to achieve auto production line mode.

P2060A/P3080A • Applied Industries

|  |   |  |  |
|--|---|--|--|
| <br>家具<br>furniture             | <br>医疗器械<br>medical device | <br>健身器材<br>fitness equipment | <br>展具<br>display shelf           |
| <br>汽车行业<br>Automobile industry | <br>农林机械<br>farm machinery | <br>消防管道<br>Fire pipe         | <br>钢架结构<br>Steel frame structure |
| <br>石油勘探<br>oil exploration    | <br>桥梁<br>bridge          | <br>船舶<br>boating            | <br>构件<br>structure parts        |